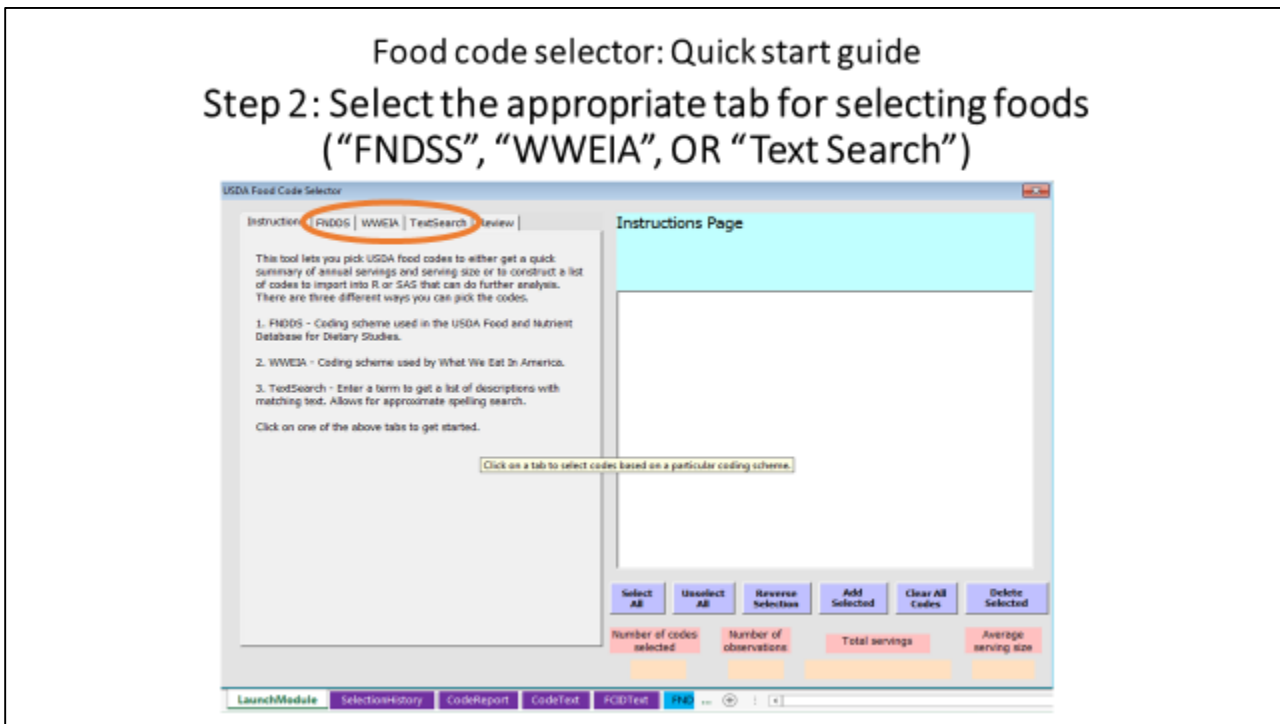
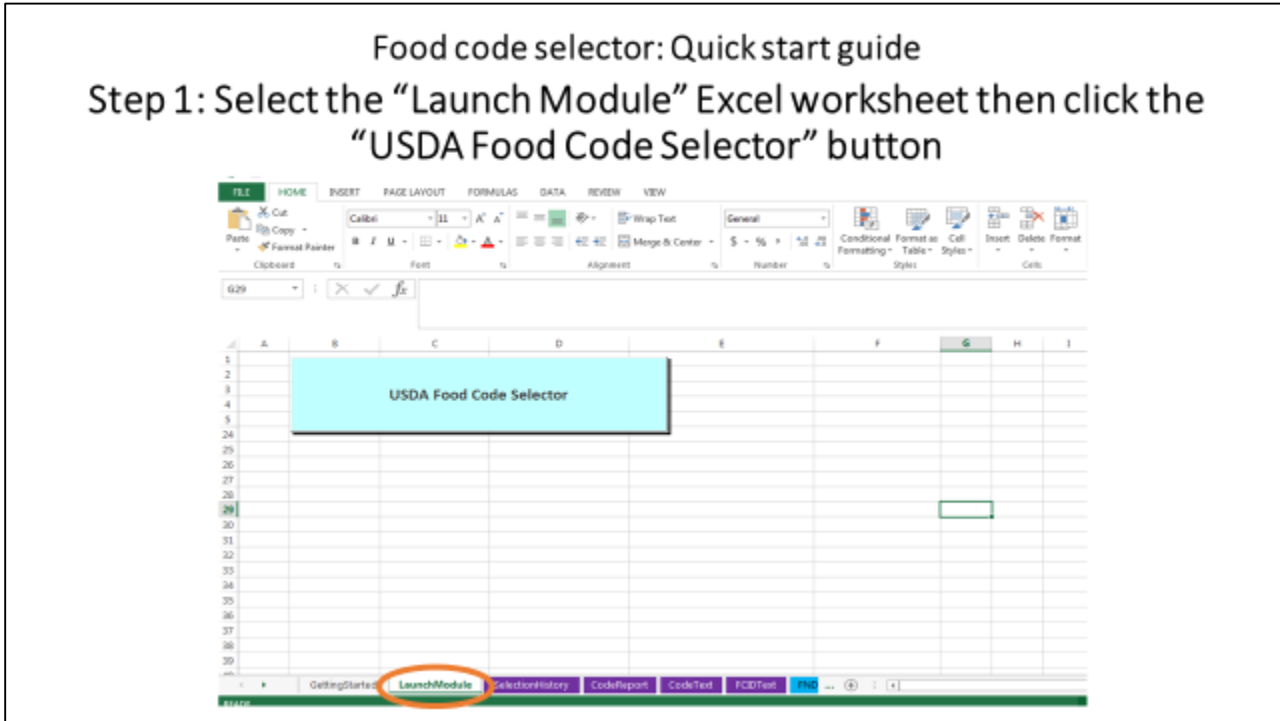
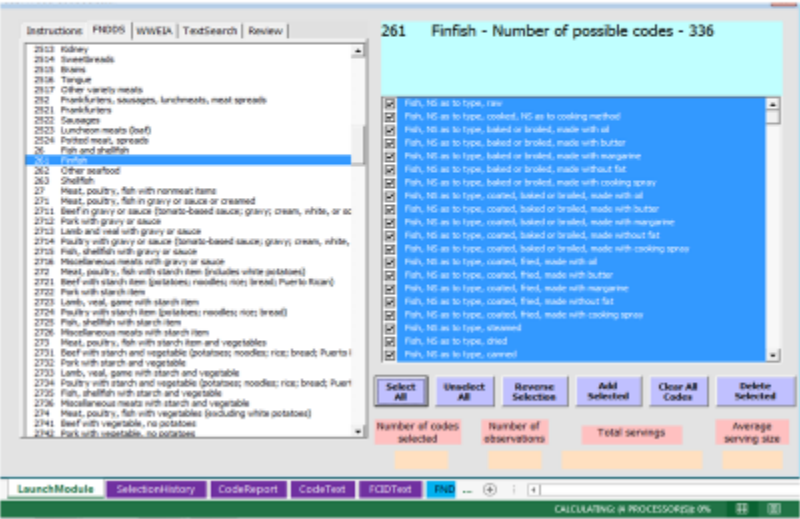


Food Code Selector: Quick start guide

1. Select the “Launch Module” worksheet and click the “USDA Food Code Selector” button
2. Select the appropriate tab for selecting foods
3. Add selected foods



The FNDDS and WWEIA tabs allow users to extract NHANES foods by food categories (FNDDS categories are listed on the "GettingStarted" worksheet of the Excel file)



The TextSearch tab allows users to search foods by keywords(exact or approximate spelling)

